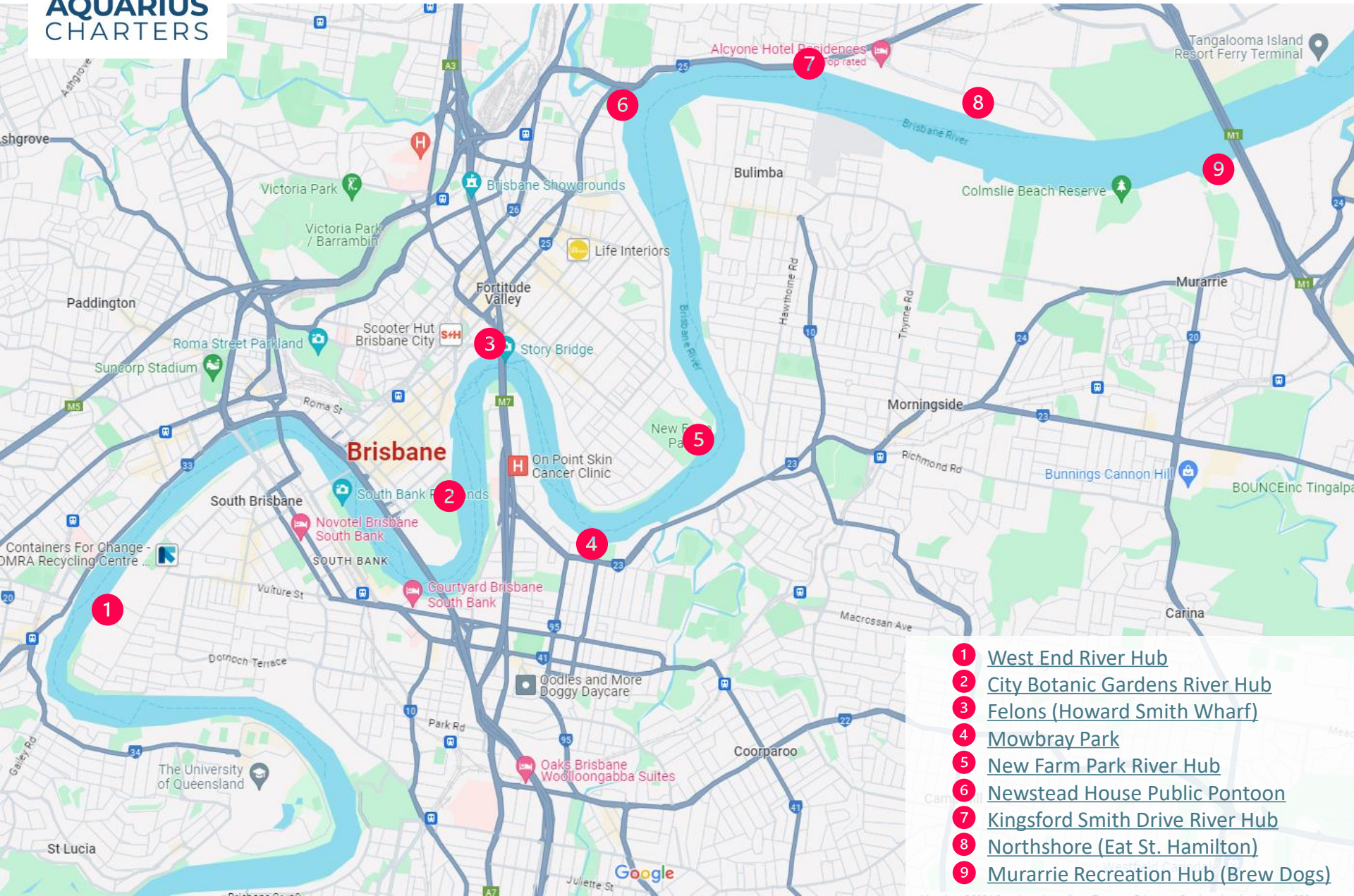




**AQUARIUS
CHARTERS**

Brisbane Pontoon Locations

(Click on locations to open in Maps)



- 1 [West End River Hub](#)
- 2 [City Botanic Gardens River Hub](#)
- 3 [Felons \(Howard Smith Wharf\)](#)
- 4 [Mowbray Park](#)
- 5 [New Farm Park River Hub](#)
- 6 [Newstead House Public Pontoon](#)
- 7 [Kingsford Smith Drive River Hub](#)
- 8 [Northshore \(Eat St. Hamilton\)](#)
- 9 [Murarrie Recreation Hub \(Brew Dogs\)](#)



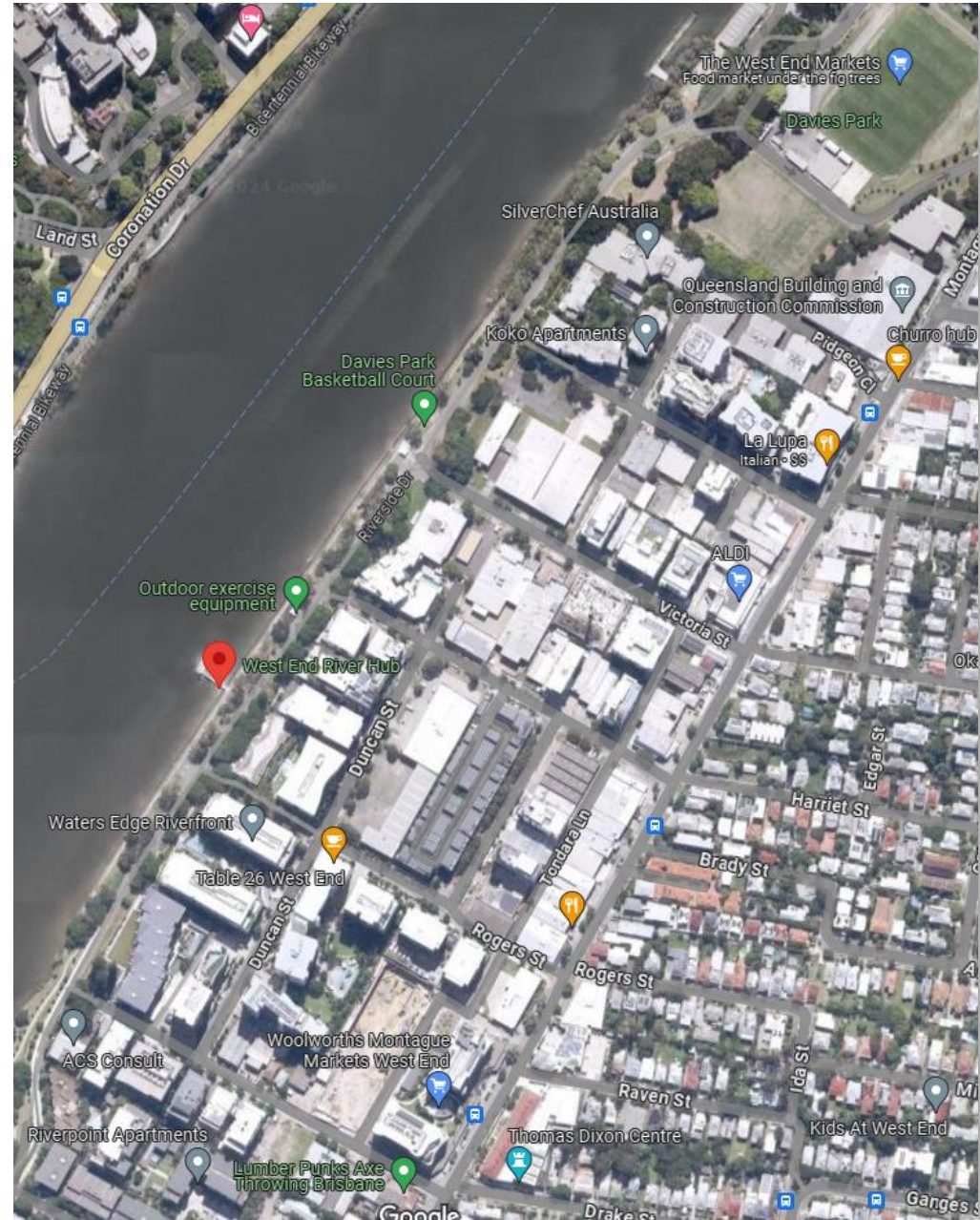
AQUARIUS
CHARTERS

Opposite Coronation Drive, the West End Pontoon is ideal for a Saturday Afternoon cruise post the West End Morning Markets and also close to some fun group activities like Lumber Punks Axe Throwing!

Plenty of public transport options but limited parking opportunities.



West End River Hub 1

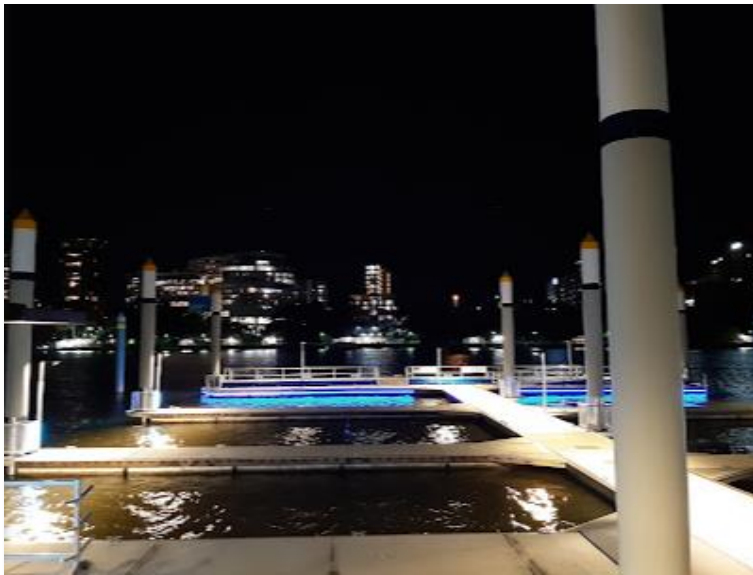




AQUARIUS
CHARTERS

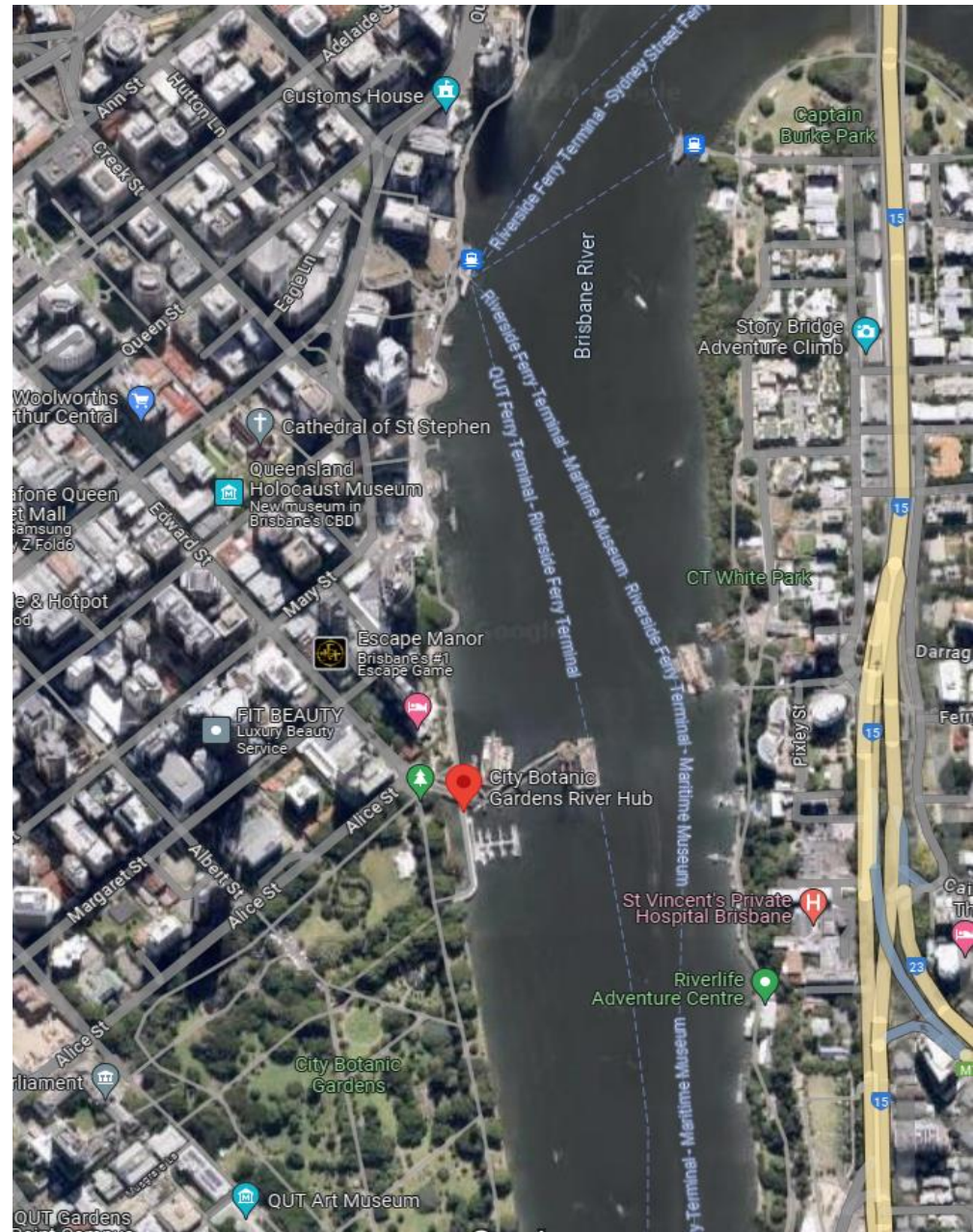
Close to the CBD, and boasting a botanic backdrop to your cruise, this pontoon is a favourite for corporate cruises!

Please note that we need to book this pontoon in advance (which incurs a small fee paid to BCC), and availability isn't guaranteed until the booking has been placed.



City Botanic Gardens River Hub

2





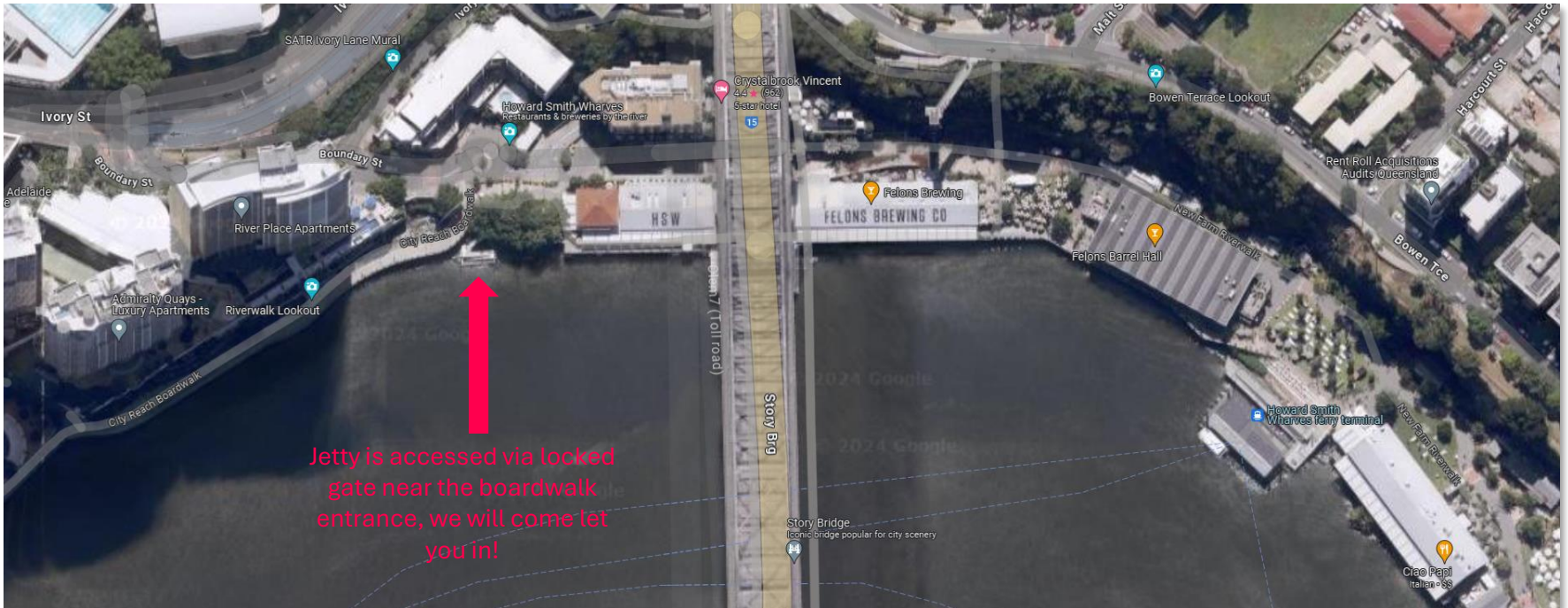
AQUARIUS
CHARTERS

Our most popular drop off for those wishing to kick on, Felons is a major venue with plenty to keep the party going!

It is close to the city; and via the cliff lift, it is even walking distance to the Valley nightlife.

Note; Felons charge a fee of \$200 per berthing for use of the pontoon.)

Felons (Howard Smith Wharf) 2





AQUARIUS
CHARTERS

A little-known Brisbane gem, Mowbray Park trees are ablaze with lighting at night creating a stunning, somewhat magical sight!

There is free parking provided by Brisbane City Council for up to 65 cars as part of the Park and Ride scheme, very handy!

Mowbray Park 4





AQUARIUS
CHARTERS

New Farm Park rivals the botanical gardens in beauty, and stars the Brisbane Powerhouse and weekly markets as additional drawcards.

Usually had plenty of parking but be warned, the park gates are locked at 11pm until the next morning!

Please note that we need to book this pontoon in advance (which incurs a small fee paid to BCC), and availability isn't guaranteed until the booking has been placed.



New Farm Park River Hub 5





AQUARIUS
CHARTERS

Historic Newstead House sits overlooking Brisbane River and a well-appointed public pontoon close to the Rotunda.

A good kick off spot with on-site parking and additional parking close by.

Breakfast Creek Hotel is walking distance as a handy meet up spot!



Newstead House Public Pontoon

6

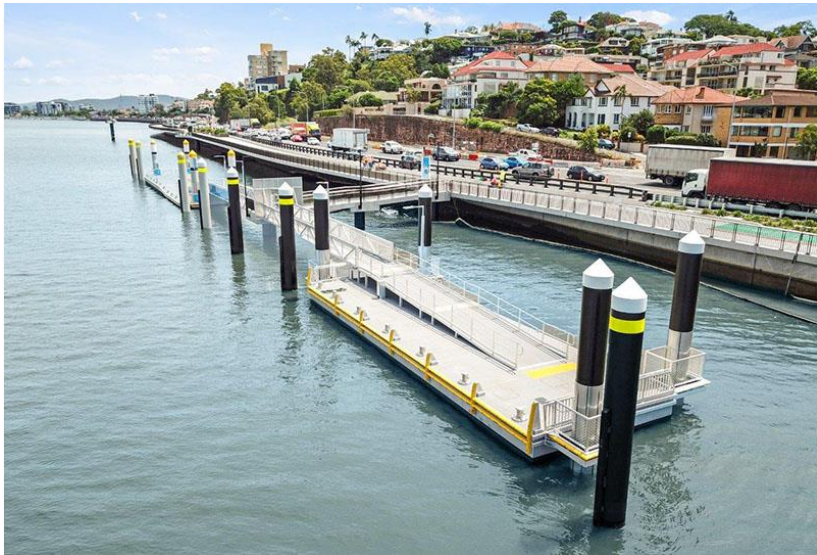




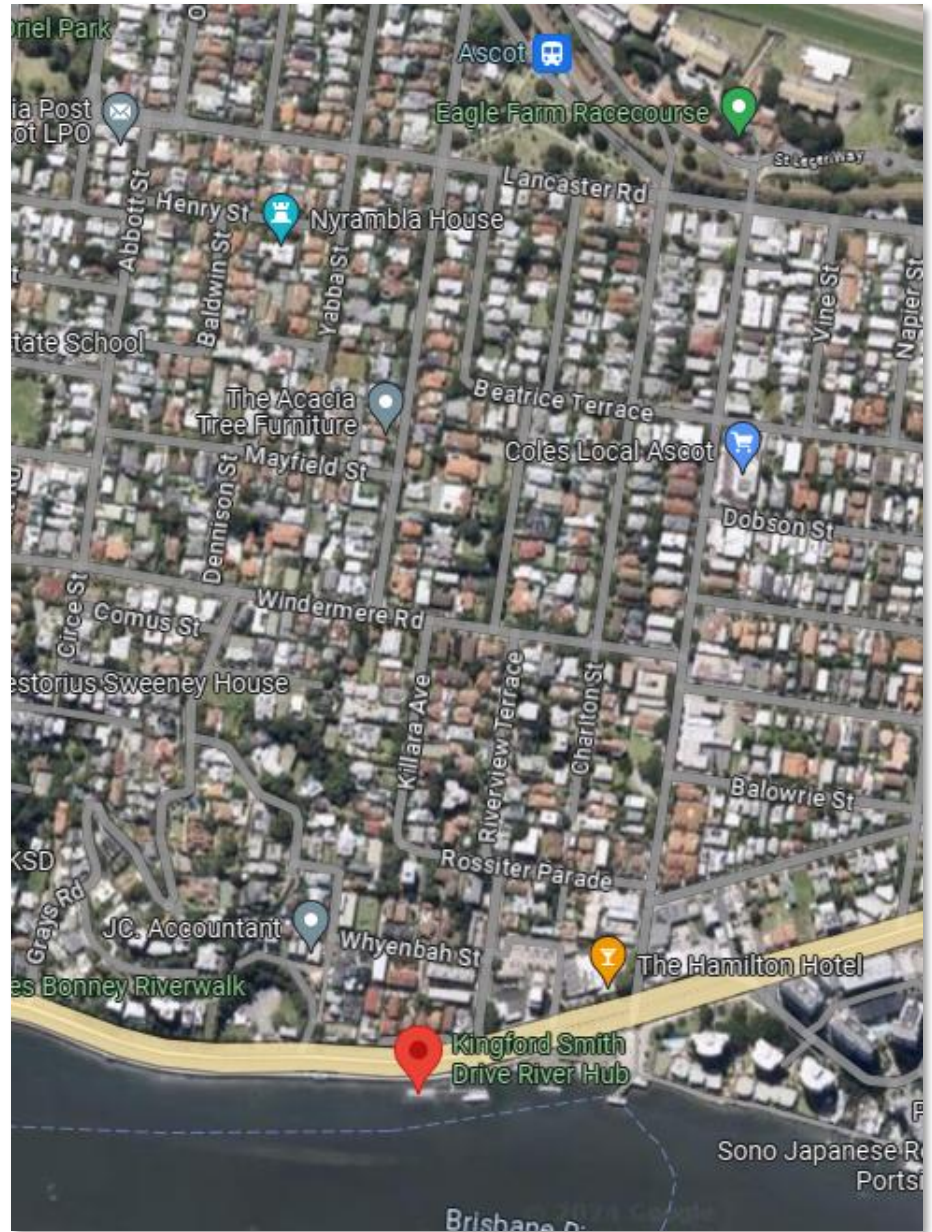
AQUARIUS
CHARTERS

Next to Bretts Wharf ferry terminal and the well renowned Hamilton Hotel, this pontoon has local street parking and is walking distance to Doomben and Eagle Farm Racecourses. (20 – 25mins walk).

It is the closest pontoon for those around Portside Wharf.



Kingsford Smith Drive River Hub 7



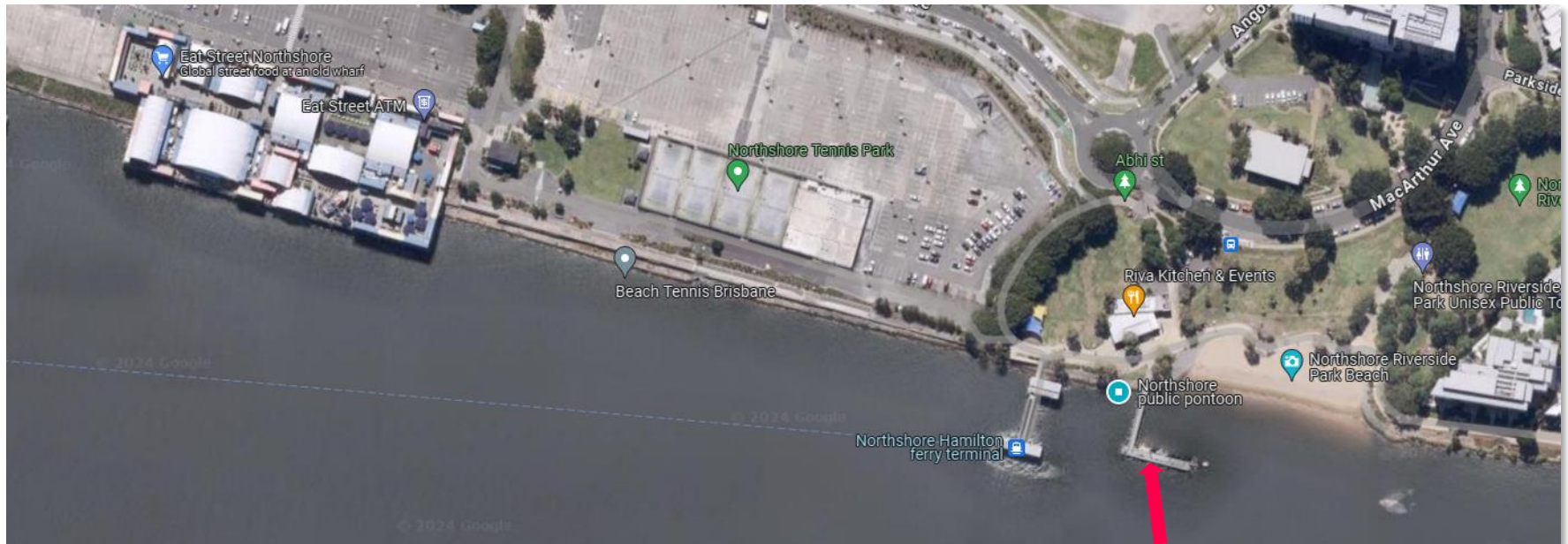


AQUARIUS
CHARTERS

Parking abounds at Northshore, making it an ideal kick off spot to a big night out where you can forget your car until the next day and let Aquarius Charters drop you off in the city to kick on!

Eat Street is also just a 2-minute walk for those heading in the other direction and looking for a finale to an afternoon cruise on the river!

Northshore (Eat St. Hamilton) 8





AQUARIUS
CHARTERS

Murarrie Recreation Hub (Brew Dogs)

9

Alongside the Gateway bridge, this pontoon is easy to find from the highway, has plenty of parking and boasts an on-site brewery!

Brew Dogs has a massive outdoor area overlooking the pontoon where guests can meet up for a cheeky schooner before boarding Aquarius enroute to a night on the town to remember!

